



Enertec

Product Collection

Windows and Doors built today for a better tomorrow

uPVC Windows and Doors by Enertec

Enertec Windows and Doors is a family-owned window manufacturing business located in Melbourne's Southeastern suburbs, specifically in Braeside, Victoria, Australia. Founded in 2008, we specialize in producing high-quality uPVC windows and doors, often featuring European style double glazing. Our primary objective is to enhance the livability, security, and comfort of homes through their window and door solutions.

We pride ourselves in manufacturing your products in our Melbourne factory, which allows for custom sizing to fit various spaces and the ability to meet tight deadlines. Enertec utilizes high-quality components in our manufacturing process, including German Kömmerling uPVC profiles, 100% Australian-made double-glazed glass from FGS Glass, along with Siegenia and FSA hardware for hinges, glides, locks, and handles.

Enertec's uPVC windows and doors offer a range of benefits over traditional aluminium or timber options. These include impressive thermal insulation, contributing to indoor comfort year-round and potentially reducing energy costs. They also provide enhanced security through state-of-the-art multi-point locking systems, making forced entry significantly more difficult. Furthermore, our products are designed to be low maintenance, requiring no scraping, sanding, or painting. Enertec also highlights the eco-friendly aspects of our products, as they are made from significant amounts of recycled PVC and are 100% recyclable through programs like Kömmerling's ReKönvert uPVC recycling initiative.

Our product range includes various window styles such as sliding, awning, stacker, tilt and turn, and bay windows, along with different door types like bi-fold, lift and slide, French, and entry doors. Enertec offers services for both new constructions and replacement projects, and we also provide a supply-only service for builders and developers. We have completed numerous domestic and commercial projects across Melbourne and Australia, focusing on client satisfaction. Enertec has also implemented sustainability initiatives at our factory, including solar panel installation and participation in tree-planting programs, demonstrating our commitment to environmental responsibility.



German Designed and Engineered Manufactured in Australia



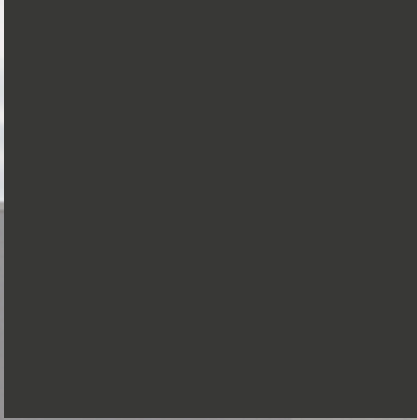
Key Benefits

- **Superior Energy Efficiency:** Our uPVC frames with double glazing drastically reduce heat transfer, lowering your energy bills. They contribute significantly to a comfortable indoor climate and can help achieve Passive House standards.
- **Enhanced Security:** With a steel core, multi-point German locking systems, and impact-resistant uPVC, Enertec windows and doors offer robust protection against forced entry and unwanted visitors.
- **Excellent Noise Reduction:** The combination of uPVC, double glazing, and advanced sealing effectively minimizes outside noise, creating a quieter living or working space.
- **Low Maintenance:** Say goodbye to painting and sanding! Enertec's uPVC won't rot, fade, or crack, requiring virtually no upkeep.
- **Eco-Friendly:** Made with recycled materials and 100% recyclable, Enertec is a Carbon Neutral Partner, committed to sustainable practices.
- **High Quality & Australian Made:** Custom-built in Melbourne using premium Kömmerling profiles, FGS Glass, and Siegenia hardware. They're also certified bushfire-proof (BAL 40) and cyclone-proof.



Locally stocked

Kommerling in Australia currently offer 6 colors which are stocked at its Melbourne warehouse for immediate availability and local processing through Enertec.



Anthracite Grey
similar RAL 7016



Smooth Black
similar RAL 9011



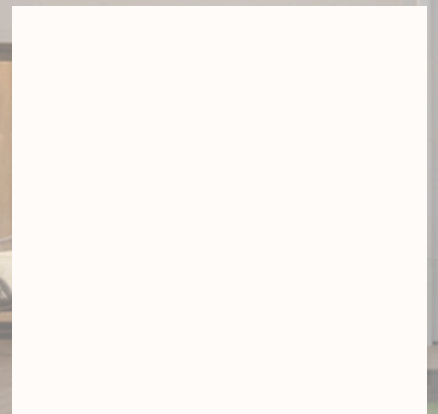
Golden Oak
similar RAL 8001



Signal Grey
similar RAL 7004



White
similar RAL 9016



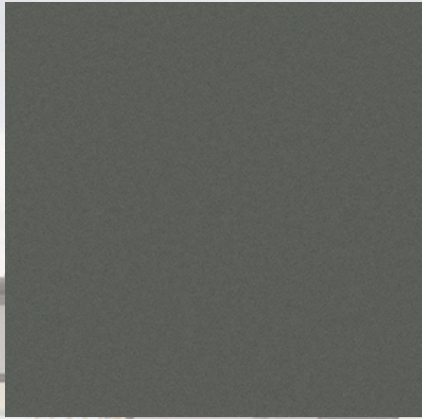
Cream
similar RAL 9001



Scan me!

Locally Manufactured

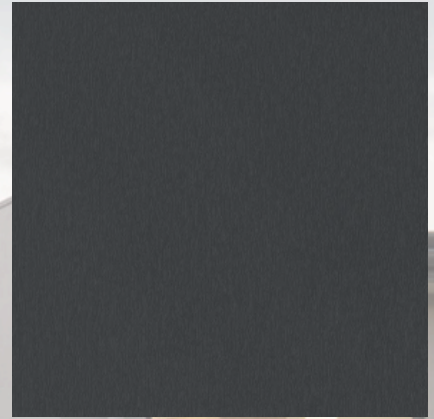
Kommelring in Australia offer an extended color range, laminated in the Ravenhall warehouse this range has an extended lead time, talk with your Enertec rep for our current lead time today.



Basalt Grey
similar RAL 7012



Turner Oak Toffee
similar RAL 8028



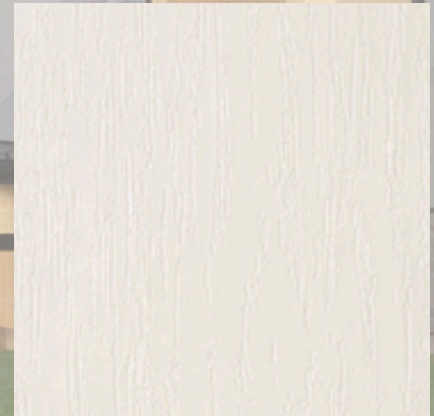
Slate Grey
similar RAL 7015



Turner Oak Malt
similar RAL 1001



Light Grey
similar RAL 7035



Woodgrain White
similar RAL 9152



Kitami Dark
similar RAL 7021



Ceylon Black

printed colors shown may vary slightly from the actual finished product

Entry Door

About

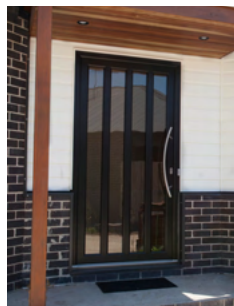
Enertec uPVC entry doors are custom manufactured in Melbourne using only the highest quality components and materials. uPVC entry doors can be custom-built to suit any size opening and are available in a large range of colours and profiles.

Operation

Our uPVC double-glazed entry doors are available with smart locks that securely lock the door automatically due to their multi-point locking function. Sync your locking system to your mobile phone for added convenience. Ask about our 0 threshold for incredibly smooth accessibility.

Performance

- Attach wireless electronic locking system
- Fully customise looks and colours
- Multi-point locking system for added security



French Door

About

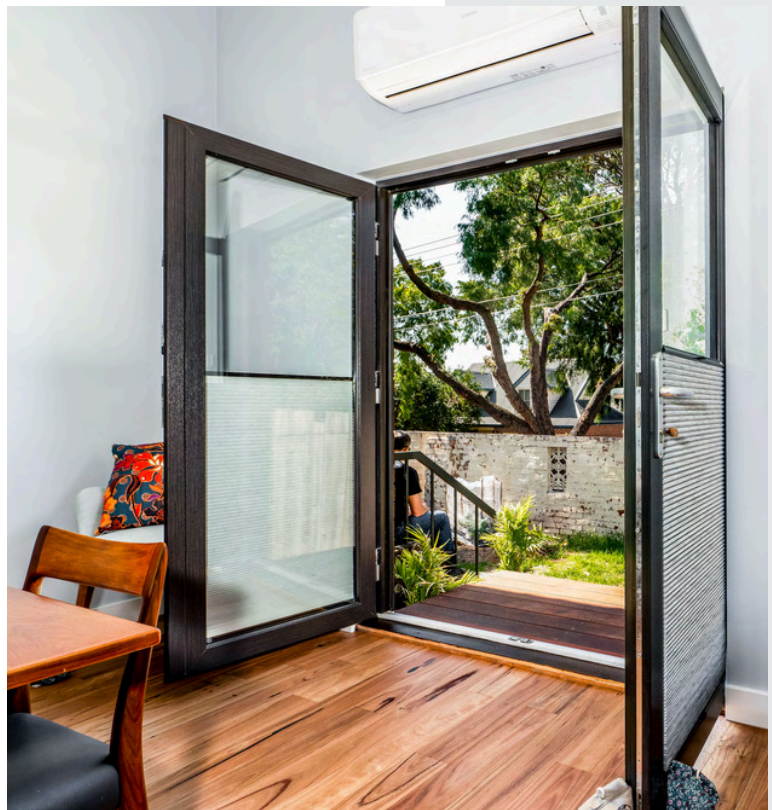
uPVC French doors allow an abundant quantity of light to flow from outside into your home or office and are renowned for their stylish look and feel. Custom built in Enertec's Melbourne based factory, modern uPVC French Doors are extremely secure; they offer incredible insulation and are maintenance-free, unlike timber versions that often shrink and swell in response to changing weather conditions, you will never need to sand or paint them, and they do an excellent job blocking out external noise.

Operation

French doors operate in the same way as other hinged doors, they are generally outside facing, so the doors swing inwards.

Performance

- Open one or both doors
- Multi-point locking system
- Two panels with large openings



Laundry Door

About

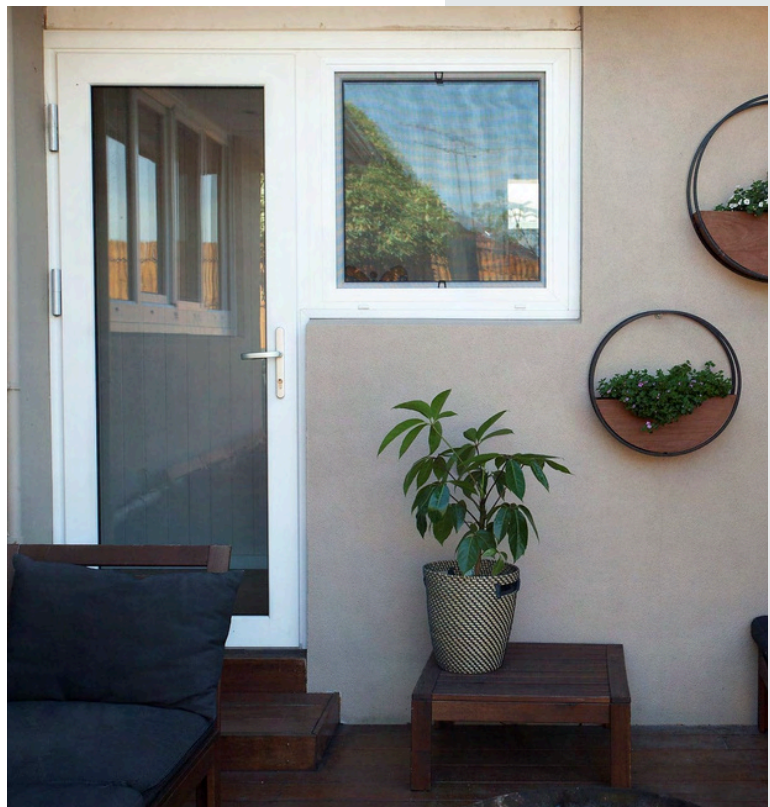
uPVC laundry doors and windows by Enertec are generally manufactured as a combination of hinged door and adjoining window. as with the complete range of Enertec's uPVC windows and doors, these laundry doors and windows are manufactured in Melbourne using high quality materials and components.

Operation

uPVC laundry doors and windows can be custom manufactured to suit your space and needs.

Performance

- Multi-point locking system
- Easy to ventilate the laundry space
- Modern sleek designs



Bi-Fold Door

About

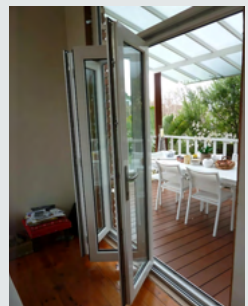
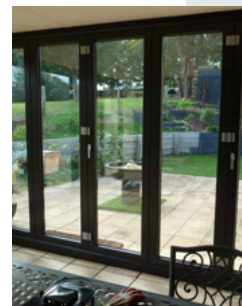
Bi-fold double-glazed sliding doors by Enertec are a popular addition to any home or business looking to enhance an indoor/ outdoor area. Custom built to fit any space, these uPVC bi-fold doors are available in 3, 4, 5, or 6 panel combinations.

Operation

The panels can collapse to one or both sides when fully opened and can be easily operated by just one handle for easy use, this style of double-glazed sliding door gives you the largest possible connection between you indoor and outdoor living spaces. These doors also feature our advanced multi-point locking system for added security.

Performance

- Up to 7 panels
- 95% opening
- Choose your opening size (open one or all doors)



Stacker Door

About

uPVC stacker doors by Enertec are manufactured using the same high-quality materials and components as our sliding doors but create a larger opening area due to the way each sash stacks. Enertec's uPVC stacker doors offer so many advantages over aluminium or timber alternatives. They are extremely energy efficient, maintenance free, and help provide a peaceful interior thanks to their ability to block out noise.

Operation

Single and double stacker doors provide one half of the space as open space whereas stacker doors provide two thirds of the total space as open space. They are also available as single stackers or double stackers.

Performance

- Optimizes sliding space and size
- Can be 3 or 6 panels
- Multi-point locking system



Sliding Door

About

uPVC sliding doors provide a 50% opening weather, it's 1 panel fixed and 1 opening or 2 fixed and 2 opening from the centre. uPVC sliding doors are all multipoint locking with brush seals.

Operation

uPVC sliding doors are a simple and modern way to upgrade the homes aesthetic and performance while sticking to a budget.

Performance

- Optimizes sliding space and size
- can be between 2 and 4 panels
- Multi point locking



Premi slide 76

About

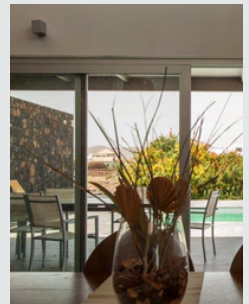
The Premi Slide 76 is an innovative sliding door and window system designed to offer a balance of aesthetic appeal, functionality, thermal performance, and space-saving advantages.

Operation

The Premi Slide 76 operates on a carriage system to ensure smooth, effortless, and quiet operation of large and heavy frames.

Performance

- Allows for slit ventilation
- Large glazing area
- Sliding horizontally to save space



Lift and Slide

About

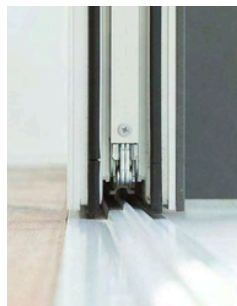
Enertec lift and slide uPVC doors are an excellent option for wide spaces boasting the ability to cover up to 12 metres of space with individual window sashes up to 3 metres wide. These high-quality doors are designed and manufactured in Australia using the high-quality materials and components that Enertec is famous for. Kommerling profiles, Australian-made double-glazed glass and high-quality hardware combined to create a product that is built for Australian conditions.

Operation

This revolutionary lift and slide product is easily operated by the lever handle which engages the doors rollers that reside under the door sashes. The rollers then lift the sashes off the bottom seal, allowing the door sashes to slide smoothly.

Performance

- Can be up to 12m
- Low threshold
- Smooth sliding mechanism
- Compressed sealing system

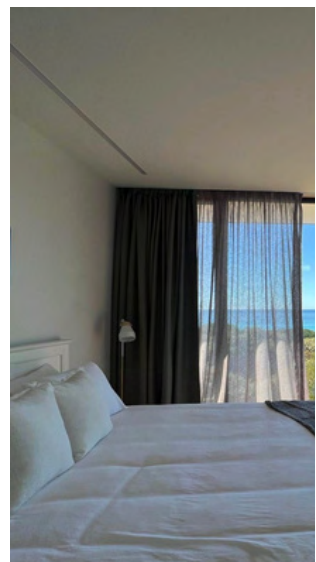
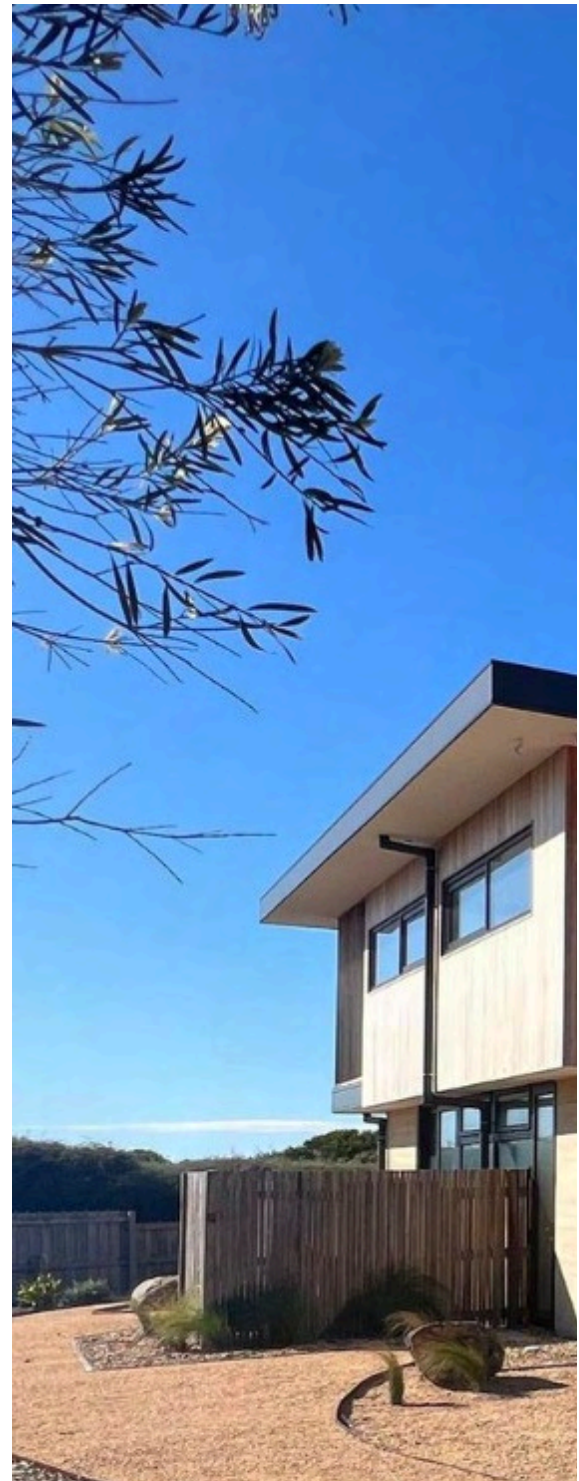


Styles and shapes to
suit your taste

The Windows of Your Dreams

Rectangle, circle, angled, or arched.
With Enertec you can pick the window shape you
like best. This opens up a wide range of design
possibilities, whether the window is set in a
modern facade or historic building, a spacious
room or in as small surrounding such as a roof
gable.

You can also choose the type of opening, one
sash or more, tilt and turn windows, outward
opening, or inward-opening windows - whatever
suits your taste.





Tilt and Turn

About

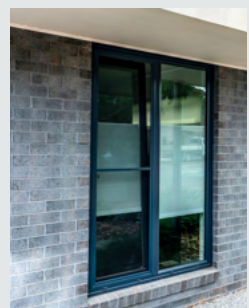
Enertec uPVC tilt and turn windows are versatile, functional, and offer an unparalleled level of security. Recognised for their excellent ventilation, they can open effortlessly from the top or swing inwards from the side with one simple turn of the handle. They allow fresh air to circulate at the top of any room, and they can be opened fully to clean or to provide a large opening space in case of an emergency.

Operation

When closed, our tilt and turn windows form an airtight seal that provides your home with unmatched superior insulation. Enertec tilt and turn windows are equipped with a multi-point locking system and dual compression seals. They ensure that your double-glazed windows provide the best security and insulation available.

Performance

- Utilise in the tilt position or open fully by turning
- Optimise air flow
- Option to lock out the turn function for multi-story



Awning

About

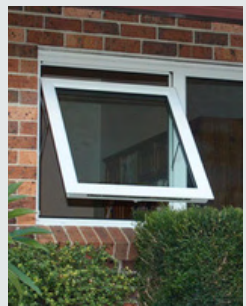
Enertec uPVC awning windows are a popular choice for customers looking for a window that provides extra ventilation while maintaining all of the other benefits of our uPVC products.

Operation

Awning windows are often installed higher in walls where they still provide plenty of natural light but allow for greater available wall space to be used below. They are also popular in wet climates as they can remain open providing ventilation but without the threat of rain entering the building.

Performance

- Opens out to save space inside
- Flash sash design
- Numerous color profiles available.



French Window

About

uPVC French windows by Enertec are a stylish and functional option for any residential or commercial project. Enertec's double-glazed uPVC French windows are popular additions to windows facing balconies and are often used for kitchen serveries to an outdoor dining area.

Operation

French windows are double-hinged and offer the unique ability to open either inward or outward, creating a large opening space.

Performance

- Open one or both window panels
- Multi-point locking
- Two panels with large openings



Tilt and Slide

About

Enertec uPVC Tilt and Slide windows are versatile, functional, and offer unparalleled security. Recognised for their excellent ventilation, they can open effortlessly from the top or slide sideways with one simple turn of the handle. They allow fresh air to circulate at the top of any room and offer advanced security due to the multi-point locking systems in place.

Operation

uPVC Tilt and Slide windows by Enertec offer a significant advantage over other styles of windows having the ability to tilt inward and from the top whilst remaining closed or locked allowing for increased airflow and ventilation. Tilt and slide windows also save space by sliding and not opening into the space.

Performance

- Utilise in the tilt position for airflow or open fully by sliding
- Saves space by sliding and not turning into the space
- Lock in tilt position for added security



Stacker/ Sliding

About

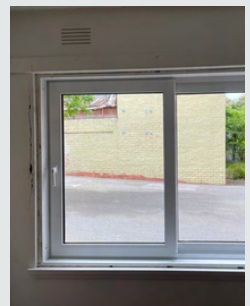
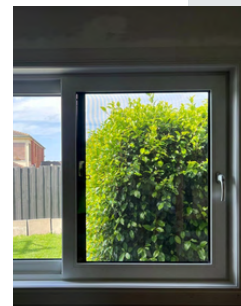
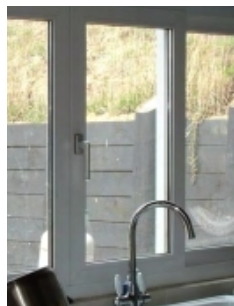
Enertec's uPVC Stacker and Sliding windows are extremely energy efficient, maintenance free and help provide a peaceful interior thanks to their ability to block out outside noise.

Operation

uPVC sliding windows by Enertec offer a seal that is far superior to traditional sliding windows eliminating issues where sliding windows are susceptible to drafts. Stacker windows provide an even greater opening area when fully open and are available as single stackers or double stackers.

Performance

- Optimizes sliding space and size
- Can be between 2 and 6 panels
- Multi-Point locking systems



Bi-Fold Window

About

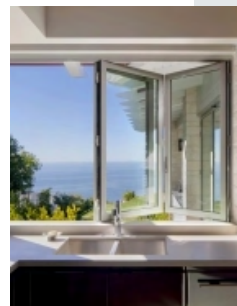
Cutom-build to fit any space these uPVC Bi-Fold windows will give you the largest possible connection between your indoor and outdoor living spaces. Enertec Bi-Fold windows are custom built in Melbourne and feature Australian made double-glazed glass.

Operation

Bi-Fold windows neatly stack to the left or right when fully open and as a result provide a large open space.

Performance

- Up to 7 panels
- 95% opening
- Choose opening size (Open one or all)



Bay Window

About

Enertec uPVC Bay Windows are a popular choice for builders and renovators looking for a feature window. They are highly secure, maintenance free and are an excellent eco-friendly choice.

Operation

The main benefit of Bay windows is based on their unique design which allows an increased amount of light to flow into a room. Unlike some timber and aluminium alternatives, Enertec's uPVC double-glazed Bay windows offer excellent insulating qualities helping to maintain comfortable internal temperatures.

Performance

- Increase floor area
- Up to 180-degree view
- Customize angle and openings



Custom Made

About

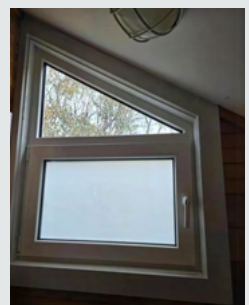
One of the benefits of being a Melbourne-based producer of uPVC windows and doors is that Enertec can custom produce their products to meet the exact needs of their customers. All of Enertec's custom-built products are manufactured to the highest quality standards ensuring your windows and doors remain maintenance-free and stand the test of time against the harsh Australian climate.

Operation

While most windows are square or rectangular in shape, Enertec have the machinery and manufacturing know-how to produce windows and doors in any shape and to fit any space.

Performance

- Numerous color profiles available
- uPVC panel inserts available to help customize your look.
- In house design studio excellence





(03) 9587 2655



Factory 3/45 Macbeth Street, Braeside, VIC 3195